

# Pouchitis disease activity index

## 1. CLINICAL SYMPTOMS

### Stool frequency

Stools/d over the norm in post-surgery	
Usual stool frequency	0
1-2 more over post-op usual	1
≥3 over post-op usual	2

### Fecal urgency/abdominal cramps

None	0
Occasional	1
Usual	2

### Fever

Absent	0
Present	1

### Rectal bleeding

None or rare	0
Present daily	1

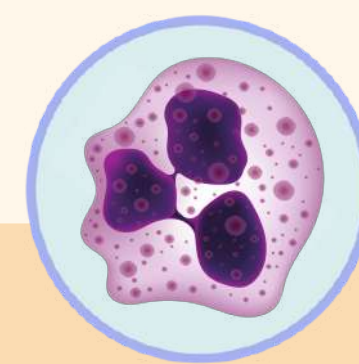
## 2. ENDOSCOPIC FINDINGS

Edema	1
Granularity	1
Friability	1
Loss of vascular pattern	1
Mucus exudate	1
Ulceration	1



## 3. HISTOLOGIC FEATURES

<b>Polymorphic nuclear leukocyte infiltration</b>	
Mild	1
Moderate + crypt abscess	2
Severe + crypt abscess	3
<b>Ulceration per low-power field (mean)</b>	
<25%	1
25%–50%	2
>50%	3



# Pouchitis disease activity index

---

## INTERPRETATION

**A total score of  $\geq 7$  is typically used to diagnose pouchitis**

