

Full Mayo Score

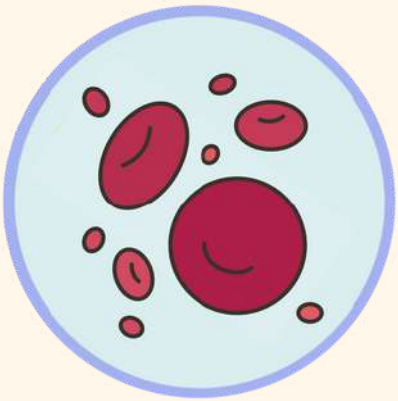
1



Stool frequency (per day)

Normal number	0
1-2 more than normal	1
3-4 more than normal	2
>4 more than normal	3

2



Rectal bleeding (the most severe of the day)

None	0
Streaks of blood with stool in <50% of cases	1
Obvious blood in most cases	2
Passes blood alone	3

3



Endoscopic findings

Normal mucosa	0
mild disease	1
Moderate disease	2
Severe disease	3

4



Physician's global assessment

Normal mucosa	0
mild disease	1
Moderate disease	2
Severe disease	3



Full Mayo Score Interpretation

SCORE

0-2	Clinical remission
3-5	Mild activity
6-10	Moderate activity
>10	Severe activity

