

Partial Mayo Score

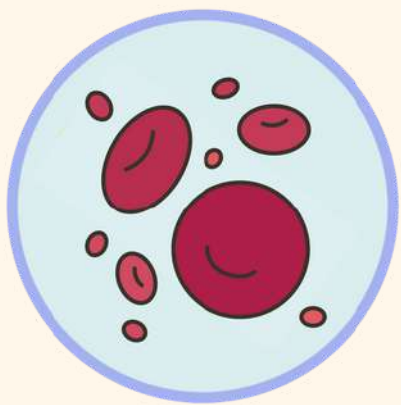
Stool frequency (per day)

1



Normal number	0
1-2 more than normal	1
3-4 more than normal	2
>4 more than normal	3

2



Rectal bleeding

(the most severe of the day)

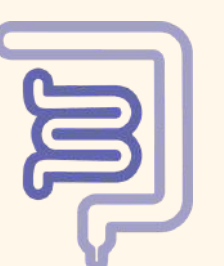
None	0
Streaks of blood with stool in <50% of cases	1
Obvious blood in most cases	2
Passes blood alone	3

3



Physician's global assessment

Normal	0
Mild disease	1
Moderate disease	2
Severe disease	3



Partial Mayo Score Interpretation

SCORE

0-1

Clinical remission

2-4

Mild activity

5-7

Moderate activity

>7

Severe activity

