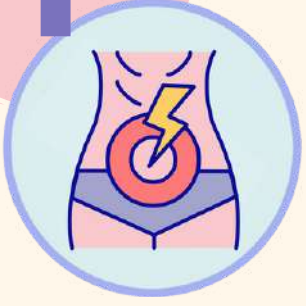


Pediatric UCAI (PUCAI)

Abdominal pain

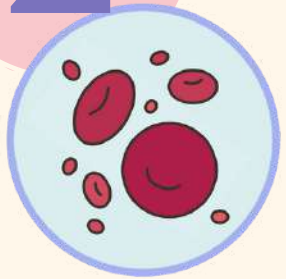
1



None	0
Can be ignored	5
Cannot be ignored	10

Rectal bleeding

2



None	0
Small amount in <50% of stools	10
Small amount with most stools	20
Large amount (>50% stool content)	30

Stool consistency

3



Formed	0
Partially formed	5
Completely unformed	10

Stool frequency (per day)

4



0-2	0
3-5	5
6-8	10
>8	15

5



Nocturnal stools	
No	0
Yes	10

6



General well-being- Activity level	
No limitation	0
Occasional limitation	5
Severe restriction	10



PUCAI

Interpretation

SCORE

0-9

Remission

10-34

Mild activity

35-64

Moderate activity

65-85

Severe activity

