

Harvey-Bradshaw Index

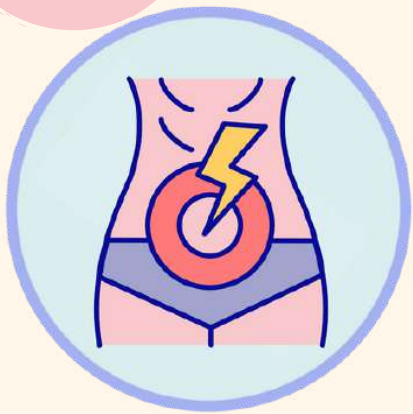
Patient well-being

1



Very well	0
Slightly below par	1
Poor	2
Very poor	3
Terrible	4

2



Abdominal pain

None	0
Mild	1
Moderate	2
Severe	3

3



Number of liquid/soft stools

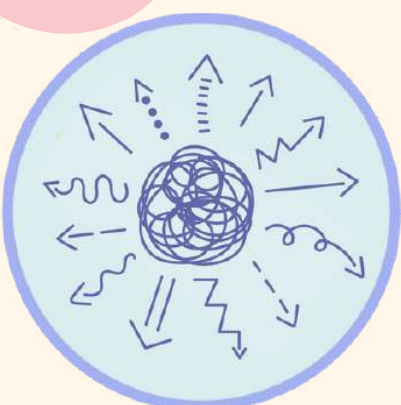
4



Abdominal mass

None	0
Dubious	1
Definite	2
Definite and tender	3

5



Complications

(One point per each one of the following)

Arthralgia; Uveitis; Erythema nodosum; Aphthous ulcer; Pyoderma gangrenous; Anal fissure; New fistula; Abscess



Harvey-Bradshaw index Interpretation

SCORE

<5

Clinical remission

5-7

Mild activity

8-16

Moderate activity

>16

Severe activity

