

Multicenter, open-label, postmarketing observational study. Adult patients with CD stricture/s with prestenotic dilatation or obstructive symptoms. Adalimumab was given at standard doses. Immunosuppressants and steroids allowed.

Primary endpoints: Success at week 24 defined as: ADA continuation with no use of prohibited treatment (steroids after 8 weeks, parenteral nutrition), no endoscopic dilatation need, no bowel surgery, no severe adverse events.

Results:

- W24, 64% of patients achieved success.
- At 3.8 years follow-up of those with 24 week success, 40% were still in prolonged success.
- Among the whole cohort 50.7% of patients did not need surgery in the 4 years after inclusion

Conclusion:

A successful response to adalimumab was observed in about two-thirds of CD patients with SSBS and was prolonged in nearly half of them till the end of follow-up. More than half of the patients were free of surgery 4 years after treatment initiation.

Efficacy of adalimumab in patients with Crohn's disease and symptomatic small bowel stricture: a multicentre, prospective, observational cohort (CREOLE) study

Table 4 Estimated and final coefficients of the clinic-radiological prognostic score to be applied to the independent factors associated with a high rate of success (n=93)

Factor/group with a high rate of success	Coefficient estimate±SE	OR of success estimate (95% CI)	p Value	Points, n
Immunosuppressive treatment/yes	1.23±0.62	3.42 (1.01–11.57)	0.040	1
Crohn's disease obstructive score />4	1.25±0.65	3.48 (0.97–12.46)	0.046	1
Duration obstructive symptoms (weeks)/<5	1.79±0.81	6.00 (1.23–29.17)	0.016	1
Length of stricture <12 cm	1.80±0.67	6.04 (1.61–22.67)	0.0042	1
Maximal small bowel diameter proximal to stricture(s) (mm)/(18–29)	1.99±0.68	7.32 (1.92–27.85)	0.0013	1
Enhancement on delayed T1-weighted sequence/marked	1.78±0.66	5.92 (1.63–21.50)	0.0034	1
Fistula/no	1.55±0.76	4.72 (1.05 to 21.11)	0.035	1

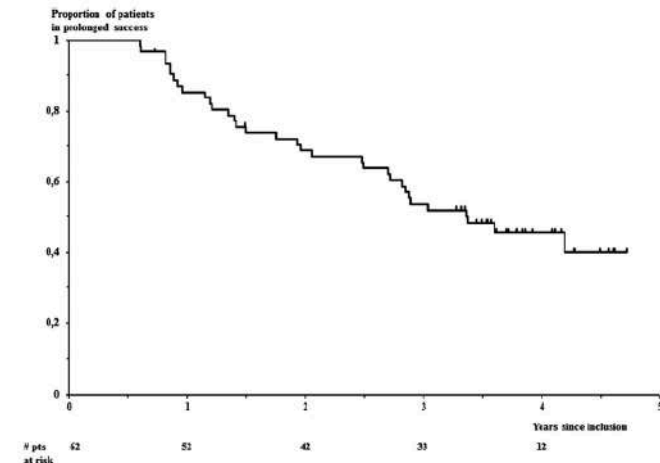


Figure 2 Time to failure in the 62 patients with Crohn's disease and symptomatic small bowel stricture(s) following the successful response to adalimumab at week 24 (33 observed failures, median±SE follow-up time 3.8±0.1 years).

