

Double-blind, placebo controlled trial.
 Patients with CD who entered remission after 16 to 24w of treatment with 25mg of MTX IM once weekly were randomised to:
 MTX 15 mg IM every week or placebo for 40 weeks.
 No other treatments were permitted.

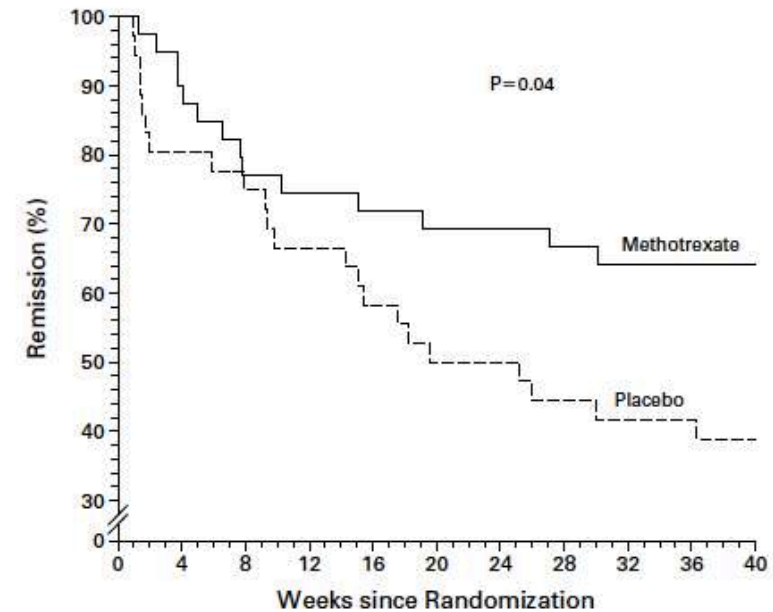
Primary endpoints: Occurrence of relapse of CD defined as CDAI of at least 100 points above baseline.

Results:

- At w40, 65% MTX vs 39% placebo were in remission, $p=0.04$
- Steroid need during follow-up 28% MTX vs 58% placebo, $p=0.01$
- No severe adverse reported in either group.

Conclusion:

In patients with Crohn's disease who enter remission after treatment with methotrexate, a low dose of methotrexate maintains remission.



No. AT RISK	
Methotrexate	40 36 30 29 28 27 27 26 25 24 19
Placebo	36 29 28 24 21 18 18 16 15 15 12

Figure 1. Kaplan-Meier Estimates of the Time to Relapse in the Methotrexate Group and the Placebo Group.

